

Computer Arithmetic Ch 8

ALU
Integer Representation
Integer Arithmetic
Floating-Point Representation
Floating-Point Arithmetic

19/09/2001 Copyright Teemu Kerola 2001 1

Integer Representation (8)

Everything with 0 and 1
no plus/minus signs
no decimal periods
assumed "on the right"

- Unsigned integers
- Positive numbers easy
 - normal binary form
- Negative numbers
 - sign-magnitude
 - two's complement

+32 +16 +8 +1

57 = 0011 1001 = 0x39

hexadecimal presentation 3*16 +9*1

sign bit = MSB
= most significant bit

-57 = 1011 1001

-57 = 1100 0111 (+1)

"sign" bit complements

19/09/2001 Copyright Teemu Kerola 2001 4

Arithmetic Logical Unit (ALU) (2)

(aritmeettis-looginen yksikkö)

- Does all "work" in CPU Rest is management!
 - integer & floating point arithmetic's
 - copy values from one register to another
 - comparisons
 - left and right shifts
 - branch and jump address calculations
 - load/store address calculations
- Control signals from CPU control unit
 - what operation to perform and when

19/09/2001 Copyright Teemu Kerola 2001 2

Twos Complement (kahden komplementti)

- Most used
- Have space for 8 bits?
 - use 7 bits for data and 1 bit for sign

+2 = 0000 0010

+1 = 0000 0001

0 = 0000 0000

-1 = 1111 1111

-2 = 1111 1110

– just like in sign-magnitude or in one's complement (but presentation is different)

ones complement: -0 = 1111 1111

19/09/2001 Copyright Teemu Kerola 2001 5

ALU Operations (5)

- Data from/to internal registers (latches)
 - input data may have been copied from normal registers, or it may have come from memory
 - output data may go to normal registers, or to memory
- Wait for maximum gate delay Fig. 8.1
- Result is ready
- Result may (also) be in flags (lipuke)
- Flags may cause an interrupt

19/09/2001 Copyright Teemu Kerola 2001 3

Why Two's Complement Presentation? (4)

- Math is easy to implement
 - subtraction becomes addition X-Y = X + (-Y)
- Have just one zero
 - comparisons to zero easy easy to do, simple circuit
- Easy to expand to presentation with more bits
 - simple circuit

57 = 0011 1001 = 0000 0000 0011 1001

-57 = 1100 0111 = 1111 1111 1100 0111

↑
sign extension

19/09/2001 Copyright Teemu Kerola 2001 6

Why Two's Complement Presentation? ⁽³⁾

- Range with n bits: $-2^{n-1} \dots 2^{n-1} - 1$
 - 8 bits: $-2^7 \dots 2^7 - 1 = -128 \dots 127$
 - 32 bits: $-2^{31} \dots 2^{31} - 1 = -2\,147\,483\,648 \dots 2\,147\,483\,647$
- Overflow easy to recognise
 - add positive & negative: overflow not possible!
 - add 2 positive/negative numbers
 - if sign bit of result is different? \Rightarrow overflow!

$$\begin{array}{r} 57 = 0011\ 1001 \\ + 80 = 0101\ 0000 \\ \hline 137 = \underline{1000\ 1001} \end{array}$$

outside range

19/09/2001 Copyright Teemu Kerola 2001 7

Integer Negation ⁽⁶⁾

- Step 1: negate all bits
- Step 2: add 1
- Step 3: special cases
 - ignore carry bit
 - negate 0?
 - check that sign bit really changes
 - can not negate smallest negative
 - results in exception

$$\begin{array}{r} 57 = 0011\ 1001 \\ 1100\ 0110 \\ \hline +1 \\ 1100\ 0111 \\ \hline 0 = 0000\ 0000 \\ 1111\ 1111 \\ \hline -0 = \underline{1}\ 0000\ 0000 \\ \hline \text{bitwise not: } 0111\ 1111 \\ \text{add 1: } \underline{1000\ 0000} \end{array}$$

19/09/2001 Copyright Teemu Kerola 2001 10

Why Two's Complement Presentation? ⁽⁵⁾

- Addition easy if one or both operands negative
 - treat them all as unsigned integers

Same circuit works for both (except for overflow check)

$$\begin{array}{r} 13 = 1101 \\ +1 = 0001 \\ \hline 14 = 1110 \end{array}$$

Digits represent 4 bit unsigned numbers

$$\begin{array}{r} -3 = 1101 \\ +1 = 0001 \\ \hline -2 = 1110 \end{array}$$

Digits represent 4 bit two's complement numbers

$$\begin{array}{r} +3 = 0011 \\ 1100 \\ \hline +1 \\ \hline 1101 \end{array}$$

19/09/2001 Copyright Teemu Kerola 2001 8

Integer Addition and Subtraction ⁽⁴⁾

- Normal binary addition
 - 32 bit full adder?
- Ignore carry & monitor sign bit for overflow
- In case of SUB, complement 2nd operand
- 2 circuits
 - addition
 - complement

Fig. 8.6

19/09/2001 Copyright Teemu Kerola 2001 11

Integer Arithmetic Operations

- Negation $X = -Y$
- Addition $X = Y+Z$
- Subtraction $X = Y-Z$
- Multiplication $X = Y*Z$
- Division $X = Y / Z$

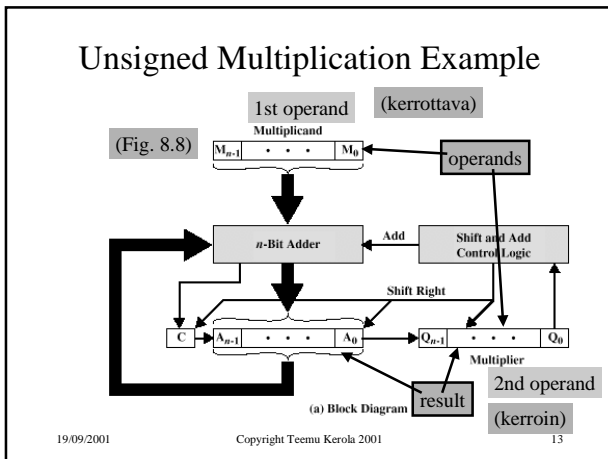
19/09/2001 Copyright Teemu Kerola 2001 9

Integer Multiplication ⁽⁴⁾

- Complex
- Operands 32 bits \Rightarrow result 64 bits
- “Just like” you learned at school
 - optimised for binary data
 - it is easy to multiply with 0 or 1!
- Simpler case with unsigned numbers
 - simple circuits
 - adder
 - shifter
 - wires

Fig. 8.7

19/09/2001 Copyright Teemu Kerola 2001 12



The Gist in Booth's Algorithm (7)

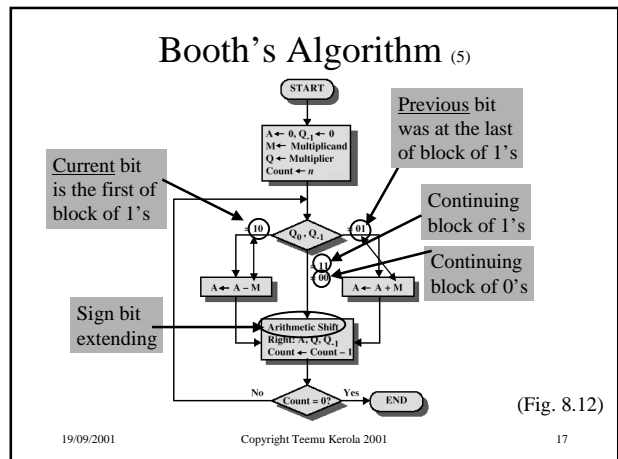
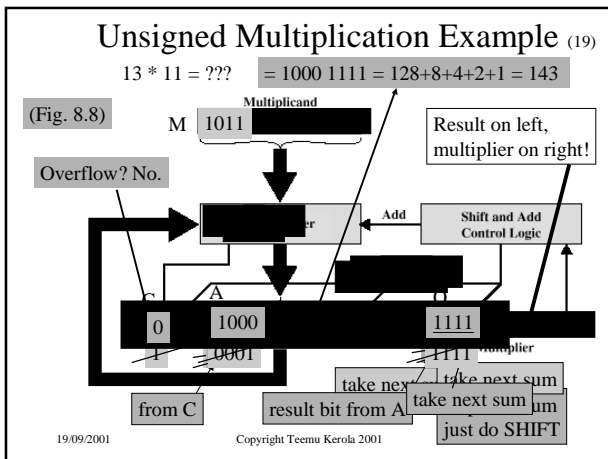
Unsigned multiplication:
addition for every "1" bit in multiplicand

$$5 * 7 \Rightarrow 0101 * 0111 \Rightarrow \begin{array}{r} 0101 \\ + 01010 \\ + 010100 \\ = 100011 \end{array}$$

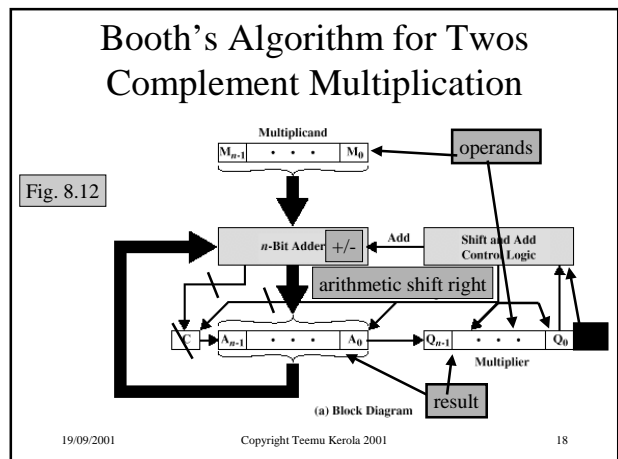
- Booth's algorithm:
 - combine all adjacent 1's in multiplicand together, replace all additions by one subtraction and one addition (to result)

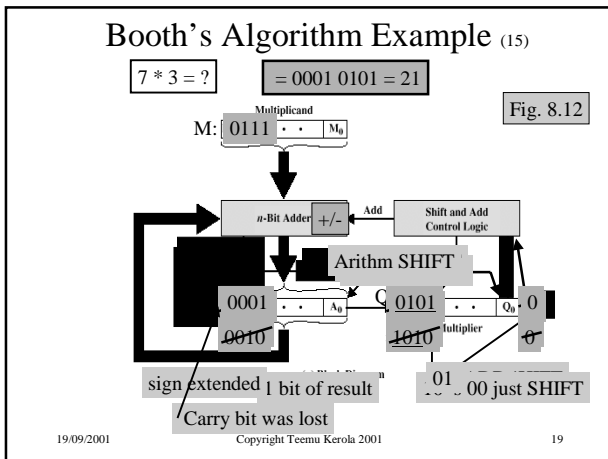
$$5 * 7 \Rightarrow 0101 * 0111 \Rightarrow \begin{array}{r} +0101000 \\ -0101 \\ = 100011 \end{array}$$

19/09/2001 Copyright Teemu Kerola 2001 16



- ### Multiplication with Negative Values
- Multiplication for unsigned numbers does not work for negative numbers
 - algorithm applies only for unsigned integer representation
 - not the same case as with addition
 - Could do it all with unsigned values
 - change operands to positive values
 - do multiplication with positive values
 - negate result if needed
 - OK, but can do better, i.e., faster
- 19/09/2001 Copyright Teemu Kerola 2001 15





Floating Point Representation

$-0.000\ 000\ 000\ 123 = -1.23 * 10^{-10}$

$+0.123 = +1.23 * 10^{-1}$

$+123.0 = +1.23 * 10^2$

$+123\ 000\ 000\ 000\ 000 = +1.23 * 10^{14}$

“+”	“14”	“1.23”
sign	exponent	mantissa or significand
(exponentti)		(mantissa)

19/09/2001 Copyright Teemu Kerola 2001 22

Integer Division

Fig. 8.15

- Like in school algorithm
 - easy: new quotient digit 0 or 1
 - M register for dividend (jaettava)
 - Q register for divisor & quotient (jakaja, osamäärä)
 - A register for (partial) remainder (jakojäännös)

19/09/2001 Copyright Teemu Kerola 2001 20

IEEE 32-bit Floating Point Standard

IEEE Standard 754

“+”	“14”	“1.1875” = “1.0011”
sign	exponent	mantissa or significand

- 1 bit for sign, 1 \Rightarrow “-”, 0 \Rightarrow “+”
- I.e., Stored value $S \Rightarrow$ Sign value = $(-1)^S$

19/09/2001 Copyright Teemu Kerola 2001 23

19/09/2001 Copyright Teemu Kerola 2001 21

IEEE 32-bit FP Standard

“+”	“15”	“1.1875” = “1.0011”
sign	exponent	mantissa or significand

- 8 bits for exponent, $2^{8-1}-1 = 127$ biased form

exponent = 5 store \rightarrow $5+127 = 132 = 1000\ 0100$

exponent = -1 store \rightarrow $-1+127 = 126 = 0111\ 1110$

exponent = 0 store \rightarrow $0+127 = 127 = 0111\ 1111$

- stored exponents 0 and 255 are special cases
 - stored range: 1 - 254 \Rightarrow true range: -126 - 127

19/09/2001 Copyright Teemu Kerola 2001 24

IEEE 32-bit FP Standard (7)

sign exponent mantissa or significand

• 23 bits for mantissa, stored so that

- 1) Binary point (.) is assumed just right of first digit
- 2) Mantissa is normalised, so that leftmost digit is 1
- 3) Leftmost (most significant) digit (1) is not stored (implied bit)

mantissa exponent
0.0011 "15"
1.100 "12"
1000 "12"
24 bit mantissa!

19/09/2001 Copyright Teemu Kerola 2001 25

IEEE-754 Floating-Point Conversion

Christopher Vickery
Computer Science
Department at
Queens College of
CUNY
(The City University
of New York)

19/09/2001

IEEE 32-bit FP Values

23.0 = +10111.0 * 2⁰ = +1.0111 * 2⁴ = ?
4+127=131

0	1000 0011	011 1000 0000 0000 0000 0000
sign	exponent	mantissa or significand
1 bit	8 bits	23 bits

1.0 = +1.0000 * 2⁰ = ?
0+127 = 127

0	0111 1111	000 0000 0000 0000 0000 0000
sign	exponent	mantissa or significand
1 bit	8 bits	23 bits

19/09/2001 Copyright Teemu Kerola 2001 26

IEEE FP Standard

- Single Precision (SP) 32 bits
- Double Precision (DP) 64 bits

(yksin- ja kaksinkertainen tarkkuus)

Table 8.3

- Special values
 - -0, +∞, -∞, NaN
 - denormalized values

Table 8.4
Not a Number

19/09/2001 Copyright Teemu Kerola 2001 29

IEEE 32-bit FP Values

0	1000 0000	111 1000 0000 0000 0000 0000
sign	exponent	mantissa or significand
1 bit	8 bits	23 bits

X = ?

$$X = (-1)^0 * 1.1111_2 * 2^{(128-127)}$$

$$= 1.1111_2 * 2$$

$$= (1 + 1/2 + 1/4 + 1/8 + 1/16) * 2$$

$$= (1 + 0.5 + 0.25 + 0.125 + 0.0625) * 2$$

$$= 1.9375 * 2 = 3.875$$

19/09/2001 Copyright Teemu Kerola 2001 27

IEEE SP FP Range

- Range
 - 8 bit exponent, effective range: -126 ... +127
 - range 2⁻¹²⁶ ... 2¹²⁷ ≈ -10⁻³⁸ ... 10³⁸
- Accuracy
 - 23 bit mantissa, 24 bit effective mantissa
 - change least significant digit in mantissa?
 - 2²⁴ ≈ 1.7 * 10⁻⁷ ≈ 6 decimal digits

19/09/2001 Copyright Teemu Kerola 2001 30

Floating Point Arithmetic (4)

- Relatively simple Table 8.5
- Done from internal registers with all bits
 - implied bit included
- Add/subtract
 - more complex than multiplication
 - denormalize first one operand so that both have same exponent
- Multiplication/Division
 - handle mantissa and exponent separately

19/09/2001 Copyright Teemu Kerola 2001 31

FP Multiplication (Division) (7)

Check for zeroes
Result 0, ±∞ ??

Add exponents
Subtract extra bias
Report overflow/underflow

Multiply (divide) mantissas

Normalise

Round (pyöristä)

19/09/2001 Copyright Teemu Kerola 2001 34

FP Add or Subtract (4)

- Check for zeroes $1.234 \cdot 10^4 + 4.444 \cdot 10^6$
 - trivial if one or both operands zero
- Align mantissas $0.01234 \cdot 10^6 + 4.444 \cdot 10^6$
 - same exponent
- Add/subtract $4.45634 \cdot 10^6$
 - carry?
 - ⇒ shift right and add increase exponent
- Normalize result $4.45634 \cdot 10^6$
 - shift left, reduce exponent

19/09/2001 Copyright Teemu Kerola 2001 32

Rounding (4)

- Guard bits $4.444 \cdot 10^6$
 - extra padding with zeroes
 - used with computations only $4.44400 \cdot 10^6$
 - computations with more accuracy than data

$2.0 - 1.9999 \approx 1.000000 \cdot 2^1 - 0.1111111 \cdot 2^1$
 $= 1.000000 \cdot 2^1 - 1.111111 \cdot 2^0$

6 bit mantissa

$1.000000 \cdot 2^1$	$1.00000000 \cdot 2^1$	Align mantissas
$-0.111111 \cdot 2^1$	$-0.11111110 \cdot 2^1$	
$= 0.000001 \cdot 2^1$	$= 0.00000010 \cdot 2^1$	2 guard bits
$= 1.000000 \cdot 2^{-5}$	$= 1.00000000 \cdot 2^{-6}$	

Different accuracy!

19/09/2001 Copyright Teemu Kerola 2001 35

FP Special Cases

- Exponent overflow (ylivuoto)
 - above max Exception Or ±∞ ?
- Exponent underflow (alivuoto)
 - below min Exception or zero or denormalized?
- Mantissa (significant) underflow
 - in denormalizing may move bits too much right
 - all significant bits lost? Oooops, lost data!
- Mantissa (significant) overflow Fix it
 - result of adding mantissas may have carry

19/09/2001 Copyright Teemu Kerola 2001 33

Rounding Choices (4)

4 digit accuracy in memory?

- Nearest representable 3.1234 or -4.5678
- Toward +∞ 3.123 or -4.568
- Toward -∞ 3.124 or -4.567
- Toward 0 3.123 or -4.568

19/09/2001 Copyright Teemu Kerola 2001 36

IEEE ∞ and NaN

- ∞
 - outside range of finite numbers
 - rules for arithmetic with ∞ : $\infty + \infty = \infty$, etc.
- NaN
 - invalid operation (E.g., 0.0/0.0) can result to NaN or exception Table 8.6
 - user control
 - quiet NaN, or exception?
 - un-initialized data?
 - programming language support?

19/09/2001 Copyright Teemu Kerola 2001 37

IEEE Denormalized Numbers ⁽⁴⁾

- Problem: What to do when can not normalize any more?
 - Exponent would underflow
- Answer: Denormalized representation
 - smallest representable exponent reserved for this purpose
 - mantissa is not normalized
 - smallest (closest to zero) value is now much smaller than with normalized representation

19/09/2001 Copyright Teemu Kerola 2001 38

-- End of Chapter 8: Arithmetic --

Motorola's PowerPC™ 602 RISC Microprocessor

http://infopad.eecs.berkeley.edu/CIC/die_photos/

19/09/2001 Copyright Teemu Kerola 2001 39