

Use case 2: Anomaly in magnetic field at year 500

Lauri's goal:

Department of Geophysics' head Lauri Pesonen has been researching samples from Finland around 500 a.d., and measuring them has given some suggestion that there was a peak in Earth magnetic field at that time. Lauri needs more research about the issue, to see if there's some truth in it.

Fabio's goal:

Lauri has asked Fabio to study more samples from that time, to be sure about the possible peak in magnetic field 1500 years ago.

Information:

- It's Wednesday 9.2.2005 15:05, Fabio is at Geophysics Department's lab in the basement of Physicum, Lauri in his office at third floor
- Fabio has 19 pieces of Estonian jars from year 500, each sample has its own cryptic code name marked on
- Jar pieces are in tubes made of substance X, to make them fit nicely inside magnetometer sample handler
- Estonian samples have already been thellier-measured up to 350 Celsius demagnetization, next up is 380 Celsius.
- Around 10 of the samples are in the oven cooling down from their 50 minute warming up, cooling also takes 50 minutes
- As the other half of samples is cooling, the other is at the same time conveniently warming up
- Results from previous temperatures are in one dat file per sample at the Squid-computer
- All samples are supposed to go through the same cycle (which they already have followed up to 350 Celsius): warm up n degrees->cool down without field->measure->warm up n degrees (again)->cool down with field->measure->warm up n+m degrees...
- First one in the next set appears to be sample "pd2-1a"

Fabio's knowledge:

- Previous results from Finnish samples suggest that magnetic field was surprisingly high back then
- Fabio can't yet tell what kind of final results to expect

Calibration

filename	last modified	Time
Sample holder	9.2.2005 10.04	(5h)
Standard sample	9.2.2005 10.07	(5h)

Project explorer

Desktop/Fabio/Antarctis

filename	Type	last modified
AT-1a	AF	6.2.2005 10:50
AT-1b	AF	6.2.2005 10:55
UP-2	AF	6.2.2005 11:05
UP-13	AF	6.2.2005 10:46
UP-15	AF	6.2.2005 10:43
UP-17	AF	8.2.2005 15:12

Measurement Sequence

Start Step Stop Load Set

800 mT Basalt

#	Tesla	D(°)	I(“)	J (T)	M(T)	X(T)	Y(T)	Z(T)	O63
1	0	202	59	1,14e-6	1,14e-7	1,30e-6	3,19e-6	-1,09e-7	1
2	50	201	59	1,08e-6	1,08e-7	1,30e-6	1,64e-6	1,64e-6	1
3	100	200	59	1,02e-6	1,02e-7	3,09e-6	8,65e-6	8,65e-6	1
4	200	200	59	8,70e-7	8,70e-8	3,44e-6	3,44e-6	3,09e-6	1
5	300	200	60	7,25e-7	7,25e-8	1,64e-6	3,09e-6	8,65e-6	1
6	400	200	60	6,21e-7	6,21e-8	8,65e-6	8,62e-6	3,44e-6	1
7	500	200	60	5,13e-7	5,13e-8	3,09e-6	3,09e-6	1,64e-6	1
8	600	201	60	4,30e-7	4,30e-8	8,62e-6	8,65e-6	8,65e-6	1
9	700	199	60	3,49e-7	3,49e-8	3,44e-6	1,30e-6	1,64e-6	1
10	800	202	62	2,84e-7	2,84e-8	3,09e-6	3,09e-6	8,65e-6	1
11									

Measurement Controls

Put sample in holder arrow up

UP-17 (AF Project)

Operator:

date:

measurement type: Auto Manual

rock type:

Site:

Comment:

Latitude:

Long:

Strike:

Dip:

Volume:

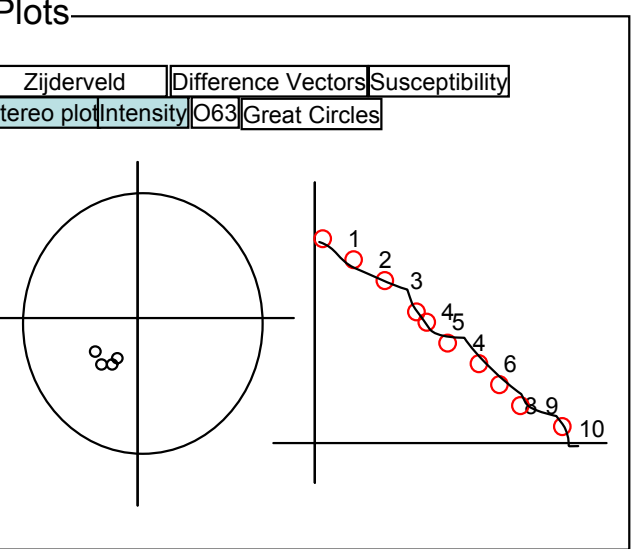
Mass:

Core sample hand sample:

Measurement Details

	X	Y	Z
BG			
0			
90			
180			
270			
BG			

	S/D	S/H	S/N
Error			



Calibration

filename	last modified	Time
Sample holder	9.2.2005 10.04	(5h)
Standard sample	9.2.2005 10.07	(5h)

Calibrate

Project explorer

Desktop/Fabio/Antarctis

- Desktop/Fabio/Estoni
- Desktop/Tomas/Mete
- Desktop/Lisa/rocks
- Desktop/Fabio/random

UP-13 AF 6.2.2005 10:46
 UP-15 AF 6.2.2005 10:43
 UP-17 AF 8.2.2005 15:12

Measurement Sequence

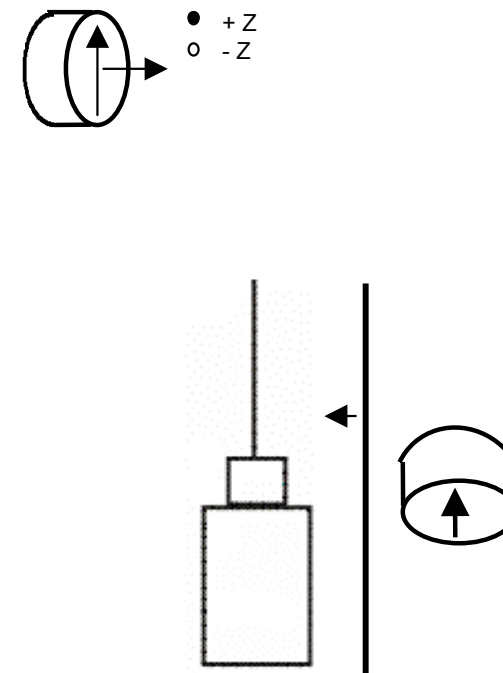
Start Step Stop

800 mT Load Set Basalt

#	Tesla	D(°)	I(“)	J (T)	M(T)	X(T)	Y(T)	Z(T)	O63
1	0	202	59	1,14e-6	1,14e-7	1,30e-6	3,19e-6	-1,09e-7	1
2	50	201	59	1,08e-6	1,08e-7	1,30e-6	1,64e-6	1,64e-6	1
3	100	200	59	1,02e-6	1,02e-7	3,09e-6	8,65e-6	8,65e-6	1
4	200	200	59	8,70e-7	8,70e-8	3,44e-6	3,44e-6	3,09e-6	1
5	300	200	60	7,25e-7	7,25e-8	1,64e-6	3,09e-6	8,65e-6	1
6	400	200	60	6,21e-7	6,21e-8	8,65e-6	8,62e-6	3,44e-6	1
7	500	200	60	5,13e-7	5,13e-8	3,09e-6	3,09e-6	1,64e-6	1
8	600	201	60	4,30e-7	4,30e-8	8,62e-6	8,65e-6	8,65e-6	1
9	700	199	60	3,49e-7	3,49e-8	3,44e-6	1,30e-6	1,64e-6	1
10	800	202	62	2,84e-7	2,84e-8	3,09e-6	3,09e-6	8,65e-6	1
11									

Measurement Controls

Put sample in holder arrow up



UP-17 (AF Project)

Operator:
 date:
 measurement type: Auto Manual
 rock type:
 Site:
 Comment:
 Latitude:
 Long:
 Strike:
 Dip:
 Volume:
 Mass:
 Core sample hand sample:

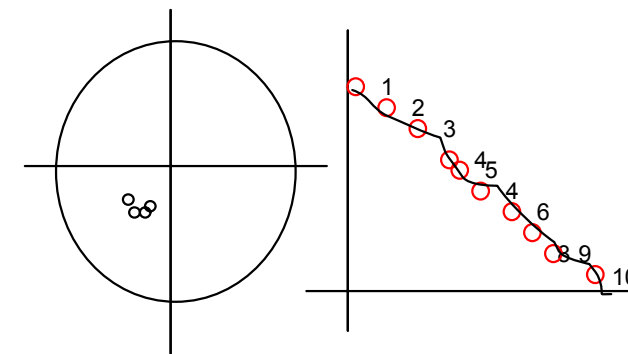
Measurement Details

	X	Y	Z
BG			
0			
90			
180			
270			
BG			

	S/D	S/H	S/N
Error			

Plots

Zijdeveld Difference Vectors Susceptibility
 Stereo plot Intensity O63 Great Circles



Calibration

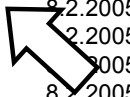
filename	last modified	Time
Sample holder	9.2.2005 10.04	(5h)
Standard sample	9.2.2005 10.07	(5h)

Calibrate

Project explorer

Desktop/Fabio/Estonia Browse...

filename	Type	last modified
ha1-1a	TH	9.2.2005 10:43
lt1-1a	TH	9.2.2005 10:46
lt2-1a	TH	9.2.2005 10:50
lt2-1b	TH	9.2.2005 10:55
lxi4-2a	TH	9.2.2005 11:07
mu1-1a	TH	9.2.2005 11:11
mu2-1a	TH	9.2.2005 11:16
pd1-1a	TH	9.2.2005 11:22
pd2-1a	TH	8.2.2005 13:11
pj1-1a	TH	8.2.2005 13:23
pj2-1a	TH	8.2.2005 13:40
ta1-1a	TH	8.2.2005 13:47
vi1-1a	TH	8.2.2005 13:55
vi2-1a	TH	8.2.2005 14:06
vi2-1b	TH	8.2.2005 14:12
vi3-1a	TH	8.2.2005 14:50
vi3-1b	TH	8.2.2005 15:12
vt1-1b	TH	8.2.2005 15:20
vt1-1c	TU	8.2.2005 15:26



Measurement Sequence

Start Step Stop

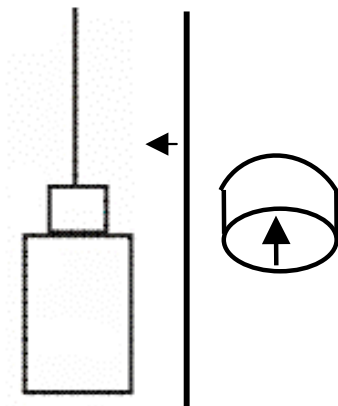
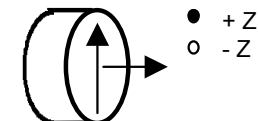
450 °C Add sequence Load Set estonia-th

#	T(°C)	D(°)	I(“)	J (T)	M(T)	X(T)	Y(T)	Z(T)	O63
10	230	292	-52	1,08e-6	4,48e-7	1,30e-6	1,64e-6	1,64e-6	1
11	231	292	-51	1,02e-6	1,52e-7	3,09e-6	8,65e-6	8,65e-6	1
12	260	294	-54	8,70e-7	4,70e-8	3,44e-6	3,44e-6	3,09e-6	1
13	202	293	-55	7,25e-7	7,25e-8	1,64e-6	3,09e-6	8,65e-6	1
14	261	305	-56	6,21e-7	6,21e-8	8,65e-6	8,62e-6	8,65e-6	1
15	290	283	-52	5,13e-7	5,13e-8	3,44e-6	3,09e-6	1,64e-6	1
16	290	284	-54	4,30e-7	1,58e-7	1,64e-6	5,65e-6	3,44e-6	1
17	291	293	-53	3,49e-7	1,02e-7	3,09e-6	4,30e-6	8,65e-6	1
18	291	285	-52	2,84e-7	8,70e-8	1,64e-6	8,65e-6	3,44e-6	1
19	320	284	-56	1,08e-6	7,25e-8	3,44e-6	1,64e-6	1,64e-6	1
20	262	296	-51	1,02e-6	6,21e-8	3,44e-6	2,44e-6	3,09e-6	1
21	321	303	-43	8,70e-7	2,25e-8	1,64e-6	8,65e-6	8,65e-6	1
22	350	284	-57	7,25e-7	4,30e-8	8,65e-6	4,64e-6	8,65e-6	1
23	351	295	-42	6,21e-7	7,25e-8	3,09e-6	8,65e-6	1,64e-6	1
24	353	282	-54	5,13e-7	6,21e-8	8,62e-6	8,62e-6	3,44e-6	1
25	380	295	-51	4,30e-7	6,21e-8	3,44e-6	3,09e-6	8,65e-6	1
26	381								
27	400								

Measurement Controls

Single step Stop now!

Put sample in holder arrow up



pd1-1a (TH Project)

Operator:

date:

measurement type: Auto Manual

rock type:

Site:

Comment:

Latitude:

Long:

Strike:

Dip:

Volume:

Mass:

Core sample hand sample:

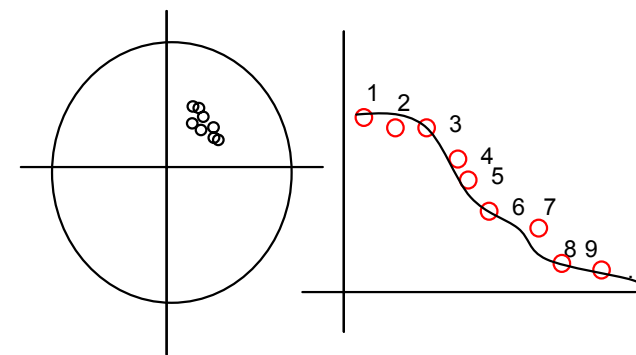
Measurement Details

	X	Y	Z
BG			
0			
90			
180			
270			
BG			

	S/D	S/H	S/N
Error			

Plots

Zijderveld Difference Vectors Susceptibility
Stereo plot Intensity O63 Great Circles



Calibration

filename	last modified	Time
Sample holder	9.2.2005 10.04	(5h)
Standard sample	9.2.2005 10.07	(5h)

Project explorer

Desktop/Fabio/Estonia

filename	Type	last modified
ha1-1a	TH	9.2.2005 10:43
lt1-1a	TH	9.2.2005 10:46
lt2-1a	TH	9.2.2005 10:50
lt2-1b	TH	9.2.2005 10:55
lxi4-2a	TH	9.2.2005 11:07
mu1-1a	TH	9.2.2005 11:11
mu2-1a	TH	9.2.2005 11:16
pd1-1a	TH	9.2.2005 11:22
pd2-1a	TH	8.2.2005 13:11
pj1-1a	TH	8.2.2005 13:23
pj2-1a	TH	8.2.2005 13:40
ta1-1a	TH	8.2.2005 13:47
vi1-1a	TH	8.2.2005 13:55
vi2-1a	TH	8.2.2005 14:06
vi2-1b	TH	8.2.2005 14:12
vi3-1a	TH	8.2.2005 14:50
vi3-1b	TH	8.2.2005 15:12
vt1-1b	TH	8.2.2005 15:20
vt1-1c	TU	8.2.2005 15:26

Measurement Sequence

Start Step Stop Load Set

450 °C estonia-th

#	T(°C)	D(°)	I(")	J (T)	M(T)	X(T)	Y(T)	Z(T)	O63
10	230	293	-54	1,08e-6	1,08e-7	1,30e-6	3,64e-6	1,64e-6	1
11	231	295	-50	1,02e-6	1,02e-7	3,04e-6	2,65e-6	8,65e-6	1
12	260	291	-55	8,70e-7	8,70e-8	3,44e-6	4,44e-6	3,09e-6	1
13	202	297	-54	7,25e-7	7,25e-8	2,34e-6	3,09e-6	8,65e-6	1
14	261	304	-51	6,21e-7	6,21e-8	8,65e-6	8,62e-6	3,44e-6	1
15	290	288	-56	5,13e-7	5,13e-8	3,09e-6	3,09e-6	1,64e-6	1
16	290	287	-57	4,30e-7	4,30e-8	8,62e-6	8,65e-6	8,65e-6	1
17	291	293	-55	3,49e-7	1,02e-7	3,44e-6	1,30e-6	1,64e-6	1
18	291	286	-57	2,84e-7	1,02e-7	3,09e-6	8,65e-6	3,44e-6	1
19	320	287	-57	8,70e-7	8,70e-8	3,44e-6	3,44e-6	1,64e-6	1
20	262	299	-52	7,25e-7	7,25e-8	1,64e-6	3,09e-6	8,65e-6	1
21	321	303	-47	6,21e-7	5,13e-8	8,65e-6	8,62e-6	1,64e-6	1
22	350	289	-56	1,08e-6	4,30e-8	3,09e-6	8,65e-6	3,44e-6	1
23	351	294	-43	1,02e-6	7,25e-8	8,62e-6	3,44e-6	8,65e-6	1
24	353	289	-56	8,70e-7	6,21e-8	3,44e-6	3,09e-6	1,64e-6	1
25	380								
26	381								
27	400								

Measurement Controls

Put sample in holder and W up

• + Z
○ - Z

pd2-1a (TH Project)

Operator:

date:

measurement type: Auto Manual

rock type:

Site:

Comment:

Latitude:

Long:

Strike:

Dip:

Volume:

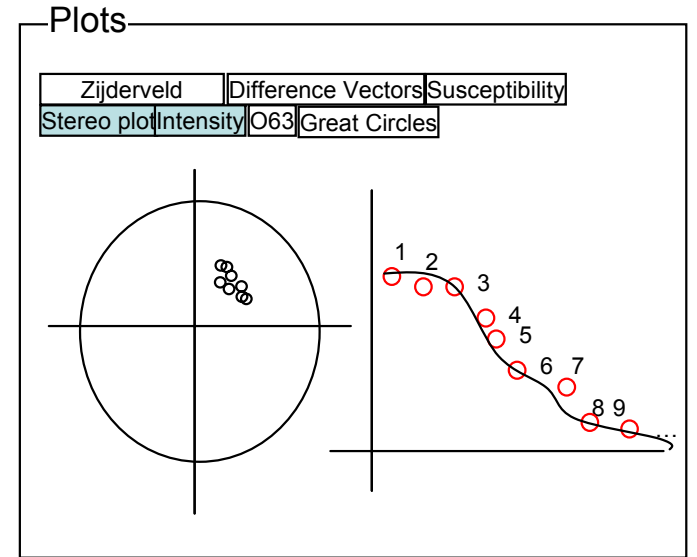
Mass:

Core sample hand sample:

Measurement Details

	X	Y	Z
BG			
0			
90			
180			
270			
BG			

	S/D	S/H	S/N
Error			



Calibration

filename	last modified	Time
Sample holder	9.2.2005 10.04	(5h)
Standard sample	9.2.2005 10.07	(5h)

Project explorer

Desktop/Fabio/Estonia

filename	Type	last modified
ha1-1a	TH	9.2.2005 10:43
lt1-1a	TH	9.2.2005 10:46
lt2-1a	TH	9.2.2005 10:50
lt2-1b	TH	9.2.2005 10:55
lxi4-2a	TH	9.2.2005 11:07
mu1-1a	TH	9.2.2005 11:11
mu2-1a	TH	9.2.2005 11:16
pd1-1a	TH	9.2.2005 11:22
pd2-1a	TH	8.2.2005 13:11
pj1-1a	TH	8.2.2005 13:23
pj2-1a	TH	8.2.2005 13:40
ta1-1a	TH	8.2.2005 13:47
vi1-1a	TH	8.2.2005 13:55
vi2-1a	TH	8.2.2005 14:06
vi2-1b	TH	8.2.2005 14:12
vi3-1a	TH	8.2.2005 14:50
vi3-1b	TH	8.2.2005 15:12
vt1-1b	TH	8.2.2005 15:20
vt1-1c	TU	8.2.2005 15:26

Measurement Sequence

Start Step Stop Load Set

450 °C estonia-th

#	T(°C)	D(°)	I(“)	J (T)	M(T)	X(T)	Y(T)	Z(T)	O63
10	230	293	-54	1,08e-6	1,08e-7	1,30e-6	3,64e-6	1,64e-6	1
11	231	295	-50	1,02e-6	1,02e-7	3,04e-6	2,65e-6	8,65e-6	1
12	260	291	-55	8,70e-7	8,70e-8	3,44e-6	4,44e-6	3,09e-6	1
13	202	297	-54	7,25e-7	7,25e-8	2,34e-6	3,09e-6	8,65e-6	1
14	261	304	-51	6,21e-7	6,21e-8	8,65e-6	8,62e-6	3,44e-6	1
15	290	288	-56	5,13e-7	5,13e-8	3,09e-6	3,09e-6	1,64e-6	1
16	290	287	-57	4,30e-7	4,30e-8	8,62e-6	8,65e-6	8,65e-6	1
17	291	293	-55	3,49e-7	1,02e-7	3,44e-6	1,30e-6	1,64e-6	1
18	291	286	-57	2,84e-7	1,02e-7	3,09e-6	8,65e-6	3,44e-6	1
19	320	287	-57	8,70e-7	8,70e-8	3,44e-6	3,44e-6	1,64e-6	1
20	262	299	-52	7,25e-7	7,25e-8	1,64e-6	3,09e-6	8,65e-6	1
21	321	303	-47	6,21e-7	5,13e-8	8,65e-6	8,62e-6	1,64e-6	1
22	350	289	-56	1,08e-6	4,30e-8	3,09e-6	8,65e-6	3,44e-6	1
23	351	294	-43	1,02e-6	7,25e-8	8,62e-6	3,44e-6	8,65e-6	1
25	380								
26	381								
27	400								

Measurement Controls

Put sample in holder arrow up

pd2-1a (TH Project)

Operator:

date:

measurement type: Auto Manual

rock type:

Site:

Comment:

Latitude:

Long:

Strike:

Dip:

Volume:

Mass:

Core sample hand sample:

Measurement Details

	X	Y	Z
BG			
0			
90			
180			
270			
BG			

	S/D	S/H	S/N
Error			

Plots

Zijderveld Difference Vectors Susceptibility

Stereo plot Intensity O63 Great Circles

Calibration

filename	last modified	Time
Sample holder	9.2.2005 10.04	(5h)
Standard sample	9.2.2005 10.07	(5h)

Calibrate

Project explorer

Desktop/Fabio/Estonia Browse...

filename	Type	last modified
ha1-1a	TH	9.2.2005 10:43
lt1-1a	TH	9.2.2005 10:46
lt2-1a	TH	9.2.2005 10:50
lt2-1b	TH	9.2.2005 10:55
lxi4-2a	TH	9.2.2005 11:07
mu1-1a	TH	9.2.2005 11:11
mu2-1a	TH	9.2.2005 11:16
pd1-1a	TH	9.2.2005 11:22
pd2-1a	TH	9.2.2005 15:08
pj1-1a	TH	8.2.2005 13:23
pj2-1a	TH	8.2.2005 13:40
ta1-1a	TH	8.2.2005 13:47
vi1-1a	TH	8.2.2005 13:55
vi2-1a	TH	8.2.2005 14:06
vi2-1b	TH	8.2.2005 14:12
vi3-1a	TH	8.2.2005 14:50
vi3-1b	TH	8.2.2005 15:12
vt1-1b	TH	8.2.2005 15:20
vt1-1c	TU	8.2.2005 15:26



Measurement Sequence

Start Step Stop

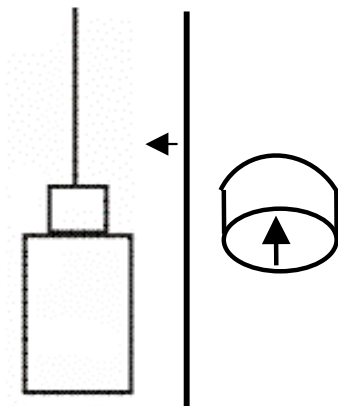
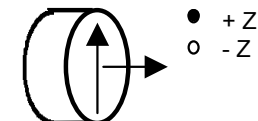
450 °C Add sequence Load Set estonia-th

#	T(°C)	D(°)	I(“)	J (T)	M(T)	X(T)	Y(T)	Z(T)	O63
10	230	293	-54	1,08e-6	1,08e-7	1,30e-6	3,64e-6	1,64e-6	1
11	231	295	-50	1,02e-6	1,02e-7	3,04e-6	2,65e-6	8,65e-6	1
12	260	291	-55	8,70e-7	8,70e-8	3,44e-6	4,44e-6	3,09e-6	1
13	202	297	-54	7,25e-7	7,25e-8	2,34e-6	3,09e-6	8,65e-6	1
14	261	304	-51	6,21e-7	6,21e-8	8,65e-6	8,62e-6	3,44e-6	1
15	290	288	-56	5,13e-7	5,13e-8	3,09e-6	3,09e-6	1,64e-6	1
16	290	287	-57	4,30e-7	4,30e-8	8,62e-6	8,65e-6	8,65e-6	1
17	291	293	-55	3,49e-7	1,02e-7	3,44e-6	1,30e-6	1,64e-6	1
18	291	286	-57	2,84e-7	1,02e-7	3,09e-6	8,65e-6	3,44e-6	1
19	320	287	-57	8,70e-7	8,70e-8	3,44e-6	3,44e-6	1,64e-6	1
20	262	299	-52	7,25e-7	7,25e-8	1,64e-6	3,09e-6	8,65e-6	1
21	321	303	-47	6,21e-7	5,13e-8	8,65e-6	8,62e-6	1,64e-6	1
22	350	289	-56	1,08e-6	4,30e-8	3,09e-6	8,65e-6	3,44e-6	1
23	351	294	-43	1,02e-6	7,25e-8	8,62e-6	3,44e-6	8,65e-6	1
24	353	289	-56	8,70e-7	6,21e-8	3,44e-6	3,09e-6	1,64e-6	1
25	380	290,4	-57,5	1,01e-6	1,02e-7	1,64e-6	2,65e-6	8,65e-6	1
26	381								
27	400								

Measurement Controls

Single step Stop now!

Put sample in holder arrow up



pd2-1a (TH Project)

Operator:

date:

measurement type: Auto Manual

rock type:

Site:

Comment:

Latitude:

Long:

Strike:

Dip:

Volume:

Mass:

Core sample hand sample:

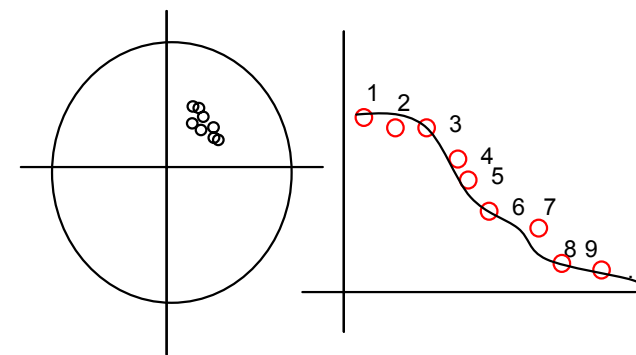
Measurement Details

	X	Y	Z
BG			
0			
90			
180			
270			
BG			

	S/D	S/H	S/N
Error			

Plots

Zijderveld Difference Vectors Susceptibility
Stereo plot Intensity O63 Great Circles



Calibration

filename	last modified	Time
Sample holder	9.2.2005 10.04	(5h)
Standard sample	9.2.2005 10.07	(5h)

Project explorer

Desktop/Fabio/Estonia

filename	Type	last modified
ha1-1a	TH	9.2.2005 10:43
lt1-1a	TH	9.2.2005 10:46
lt2-1a	TH	9.2.2005 10:50
lt2-1b	TH	9.2.2005 10:55
lxi4-2a	TH	9.2.2005 11:07
mu1-1a	TH	9.2.2005 11:11
mu2-1a	TH	9.2.2005 11:16
pd1-1a	TH	9.2.2005 11:22
pd2-1a	TH	9.2.2005 15:08
pj1-1a	TH	8.2.2005 13:23
pj2-1a	TH	8.2.2005 13:40
ta1-1a	TH	8.2.2005 13:47
vi1-1a	TH	8.2.2005 13:55
vi2-1a	TH	8.2.2005 14:06
vi2-1b	TH	8.2.2005 14:12
vi3-1a	TH	8.2.2005 14:50
vi3-1b	TH	8.2.2005 15:12
vt1-1b	TH	8.2.2005 15:20
vt1-1c	TU	8.2.2005 15:26

Measurement Sequence

Start Step Stop Load Set

450 °C estonia-th

#	T(°C)	D(°)	I(“)	J (T)	M(T)	X(T)	Y(T)	Z(T)	O63
10	230	293	-54	1,08e-6	1,08e-7	1,30e-6	3,64e-6	1,64e-6	1
11	231	295	-50	1,02e-6	1,02e-7	3,04e-6	2,65e-6	8,65e-6	1
12	260	291	-55	8,70e-7	8,70e-8	3,44e-6	4,44e-6	3,09e-6	1
13	202	297	-54	7,25e-7	7,25e-8	2,34e-6	3,09e-6	8,65e-6	1
14	261	304	-51	6,21e-7	6,21e-8	8,65e-6	8,62e-6	3,44e-6	1
15	290	288	-56	5,13e-7	5,13e-8	3,09e-6	3,09e-6	1,64e-6	1
16	290	287	-57	4,30e-7	4,30e-8	8,62e-6	8,65e-6	8,65e-6	1
17	291	293	-55	3,49e-7	1,02e-7	3,44e-6	1,30e-6	1,64e-6	1
18	291	286	-57	2,84e-7	1,02e-7	3,09e-6	8,65e-6	3,44e-6	1
19	320	287	-57	8,70e-7	8,70e-8	3,44e-6	3,44e-6	1,64e-6	1
20	262	299	-52	7,25e-7	7,25e-8	1,64e-6	3,09e-6	8,65e-6	1
21	321	303	-47	6,21e-7	5,13e-8	8,65e-6	8,62e-6	1,64e-6	1
22	350	289	-56	1,08e-6	4,30e-8	3,09e-6	8,65e-6	3,44e-6	1
23	351	294	-43	1,02e-6	7,25e-8	8,62e-6	3,44e-6	8,65e-6	1
24	353	289	-56	8,70e-7	6,21e-8	3,44e-6	3,09e-6	1,64e-6	1
25	380								
26	381								
27	400								

Measurement Controls

Put sample in holder and up

• + Z
○ - Z

pj1-1a (TH Project)

Operator:

date:

measurement type: Auto Manual

rock type:

Site:

Comment:

Latitude:

Long:

Strike:

Dip:

Volume:

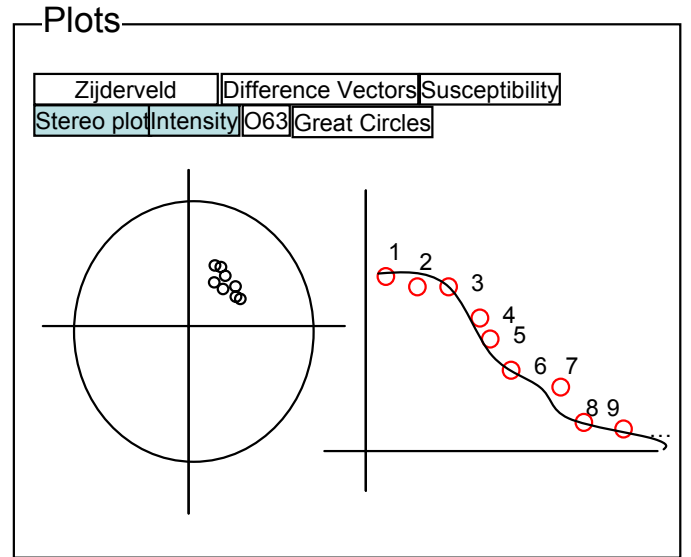
Mass:

Core sample hand sample:

Measurement Details

	X	Y	Z
BG			
0			
90			
180			
270			
BG			

	S/D	S/H	S/N
Error			



Calibration

filename	last modified	Time
Sample holder	9.2.2005 10.04	(5h)
Standard sample	9.2.2005 10.07	(5h)

Project explorer

Desktop/Fabio/Estonia

filename	Type	last modified
ha1-1a	TH	9.2.2005 10:43
lt1-1a	TH	9.2.2005 10:46
lt2-1a	TH	9.2.2005 10:50
lt2-1b	TH	9.2.2005 10:55
lxi4-2a	TH	9.2.2005 11:07
mu1-1a	TH	9.2.2005 11:11
mu2-1a	TH	9.2.2005 11:16
pd1-1a	TH	9.2.2005 11:22
pd2-1a	TH	9.2.2005 15:08
pj1-1a	TH	8.2.2005 13:23
pj2-1a	TH	8.2.2005 13:40
ta1-1a	TH	8.2.2005 13:47
vi1-1a	TH	8.2.2005 13:55
vi2-1a	TH	8.2.2005 14:06
vi2-1b	TH	8.2.2005 14:12
vi3-1a	TH	8.2.2005 14:50
vi3-1b	TH	8.2.2005 15:12
vt1-1b	TH	8.2.2005 15:20
vt1-1c	TU	8.2.2005 15:26

Measurement Sequence

Start Step Stop Load Set

450 °C estonia-th

#	T(°C)	D(°)	I(“)	J(T)	M(T)	X(T)	Y(T)	Z(T)	O63
10	230	293	-54	1,08e-6	1,08e-7	1,30e-6	3,64e-6	1,64e-6	1
11	231	295	-50	1,02e-6	1,02e-7	3,04e-6	2,65e-6	8,65e-6	1
12	260	291	-55	8,70e-7	8,70e-8	3,44e-6	4,44e-6	3,09e-6	1
13	202	297	-54	7,25e-7	7,25e-8	2,34e-6	3,09e-6	8,65e-6	1
14	261	304	-51	6,21e-7	6,21e-8	8,65e-6	8,62e-6	3,44e-6	1
15	290	288	-56	5,13e-7	5,13e-8	3,09e-6	3,09e-6	1,64e-6	1
16	290	287	-57	4,30e-7	4,30e-8	8,62e-6	8,65e-6	8,65e-6	1
17	291	293	-55	3,49e-7	1,02e-7	3,44e-6	1,30e-6	1,64e-6	1
18	291	286	-57	2,84e-7	1,02e-7	3,09e-6	8,65e-6	3,44e-6	1
19	320	287	-57	8,70e-7	8,70e-8	3,44e-6	3,44e-6	1,64e-6	1
20	262	299	-52	7,25e-7	7,25e-8	1,64e-6	3,09e-6	8,65e-6	1
21	321	303	-47	6,21e-7	5,13e-8	8,65e-6	8,62e-6	1,64e-6	1
22	350	289	-56	1,08e-6	4,30e-8	3,09e-6	8,65e-6	3,44e-6	1
23	351	294	-43	1,02e-6	7,25e-8	8,62e-6	3,44e-6	8,65e-6	1
24	353	289	-56	8,70e-7	6,21e-8	3,44e-6	3,09e-6	1,64e-6	1
25	380								
26	381								
27	400								

Measurement Controls

Put sample in holder arrow up

pj1-1a (TH Project)

Operator:

date:

measurement type: Auto Manual

rock type:

Site:

Comment:

Latitude:

Long:

Strike:

Dip:

Volume:

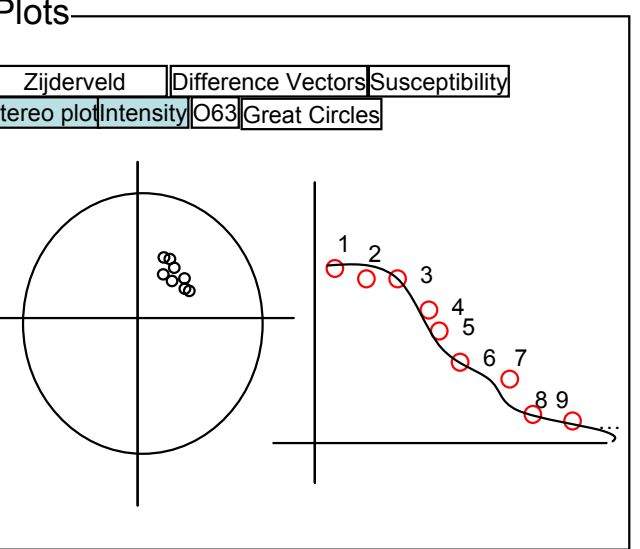
Mass:

Core sample hand sample:

Measurement Details

	X	Y	Z
BG			
0			
90			
180			
270			
BG			

	S/D	S/H	S/N
Error			



Calibration

filename	last modified	Time
Sample holder	9.2.2005 10.04	(5h)
Standard sample	9.2.2005 10.07	(5h)

Project explorer

Desktop/Fabio/Estonia

filename	Type	last modified
ha1-1a	TH	9.2.2005 10:43
lt1-1a	TH	9.2.2005 10:46
lt2-1a	TH	9.2.2005 10:50
lt2-1b	TH	9.2.2005 10:55
lxi4-2a	TH	9.2.2005 11:07
mu1-1a	TH	9.2.2005 11:11
mu2-1a	TH	9.2.2005 11:16
pd1-1a	TH	9.2.2005 11:22
pd2-1a	TH	9.2.2005 15:08
pj1-1a	TH	9.2.2005 15:11
pj2-1a	TH	8.2.2005 13:40
ta1-1a	TH	8.2.2005 13:47
vi1-1a	TH	8.2.2005 13:55
vi2-1a	TH	8.2.2005 14:06
vi2-1b	TH	8.2.2005 14:12
vi3-1a	TH	8.2.2005 14:50
vi3-1b	TH	8.2.2005 15:12
vt1-1b	TH	8.2.2005 15:20
vt1-1c	TU	8.2.2005 15:26

Measurement Sequence

Start Step Stop Load Set

450 °C estonia-th

#	T(°C)	D(°)	I(“)	J(T)	M(T)	X(T)	Y(T)	Z(T)	O63
10	230	293	-54	1,08e-6	1,08e-7	1,30e-6	3,64e-6	1,64e-6	1
11	231	295	-50	1,02e-6	1,02e-7	3,04e-6	2,65e-6	8,65e-6	1
12	260	291	-55	8,70e-7	8,70e-8	3,44e-6	4,44e-6	3,09e-6	1
13	202	297	-54	7,25e-7	7,25e-8	2,34e-6	3,09e-6	8,65e-6	1
14	261	304	-51	6,21e-7	6,21e-8	8,65e-6	8,62e-6	3,44e-6	1
15	290	288	-56	5,13e-7	5,13e-8	3,09e-6	3,09e-6	1,64e-6	1
16	290	287	-57	4,30e-7	4,30e-8	8,62e-6	8,65e-6	8,65e-6	1
17	291	293	-55	3,49e-7	1,02e-7	3,44e-6	1,30e-6	1,64e-6	1
18	291	286	-57	2,84e-7	1,02e-7	3,09e-6	8,65e-6	3,44e-6	1
19	320	287	-57	8,70e-7	8,70e-8	3,44e-6	3,44e-6	1,64e-6	1
20	262	299	-52	7,25e-7	7,25e-8	1,64e-6	3,09e-6	8,65e-6	1
21	321	303	-47	6,21e-7	5,13e-8	8,65e-6	8,62e-6	1,64e-6	1
22	350	289	-56	1,08e-6	4,30e-8	3,09e-6	8,65e-6	3,44e-6	1
23	351	294	-43	1,02e-6	7,25e-8	8,62e-6	3,44e-6	8,65e-6	1
24	353	289	-56	8,70e-7	6,21e-8	3,44e-6	3,09e-6	1,64e-6	1
25	380	290	-57	1,12e-6	1,02e-7	1,64e-6	2,65e-6	8,65e-6	1
26	381								
27	400								

Measurement Controls

Put sample in holder arrow up

pj1-1a (TH Project)

Operator:

date:

measurement type: Auto Manual

rock type:

Site:

Comment:

Latitude:

Long:

Strike:

Dip:

Volume:

Mass:

Core sample hand sample:

Measurement Details

	X	Y	Z
BG			
0			
90			
180			
270			
BG			

	S/D	S/H	S/N
Error			

