

SAVAH:

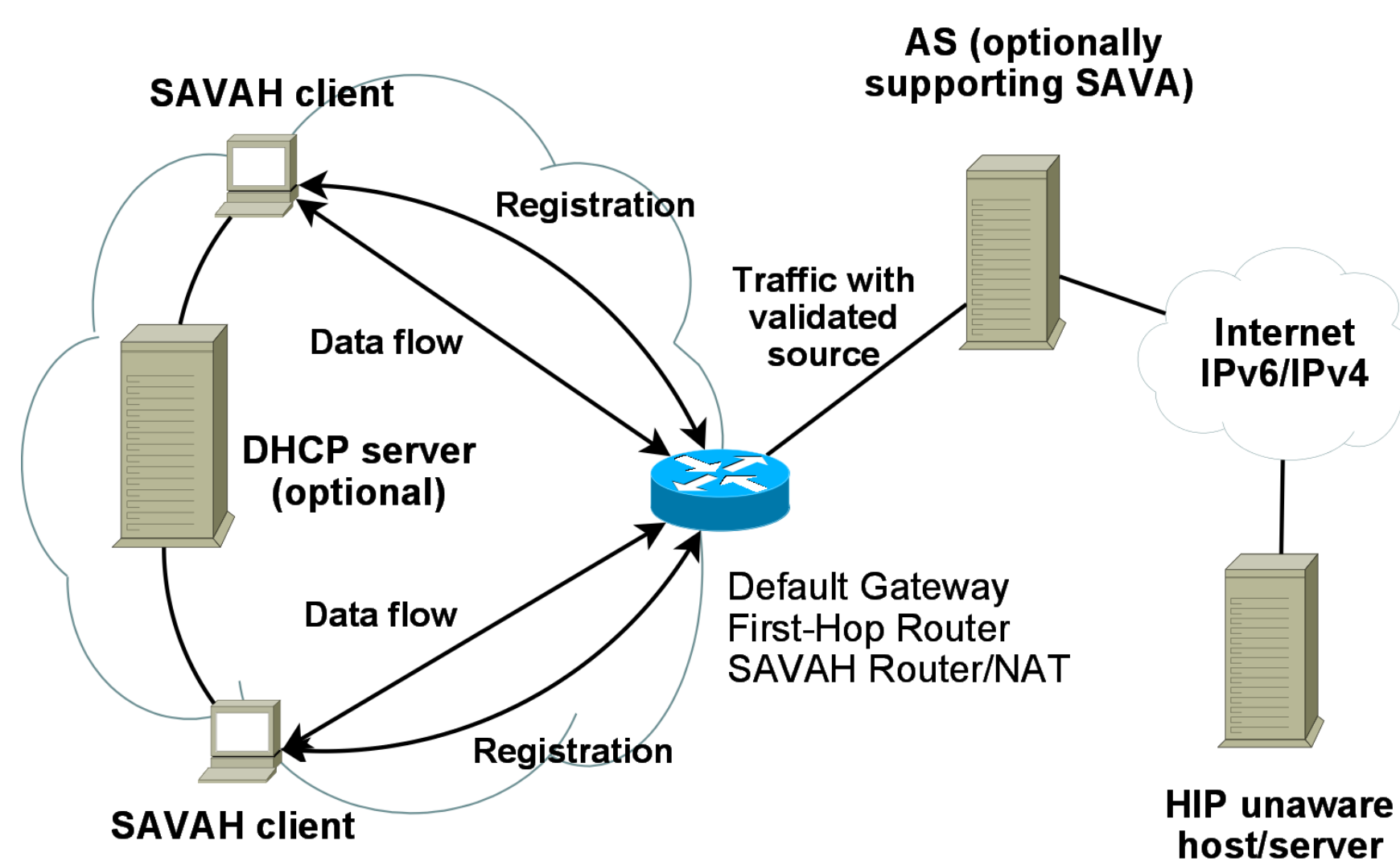
SAVAH

- Implemented on a first-hop default router placed on the edge of a network
- Relies on cryptographic identities
- Packet authentication filtering
- Integrates with source address validation
- An alternative to a CGA based Source Address Authorization and Authentication
- Suitable for both IPv4 and IPv6

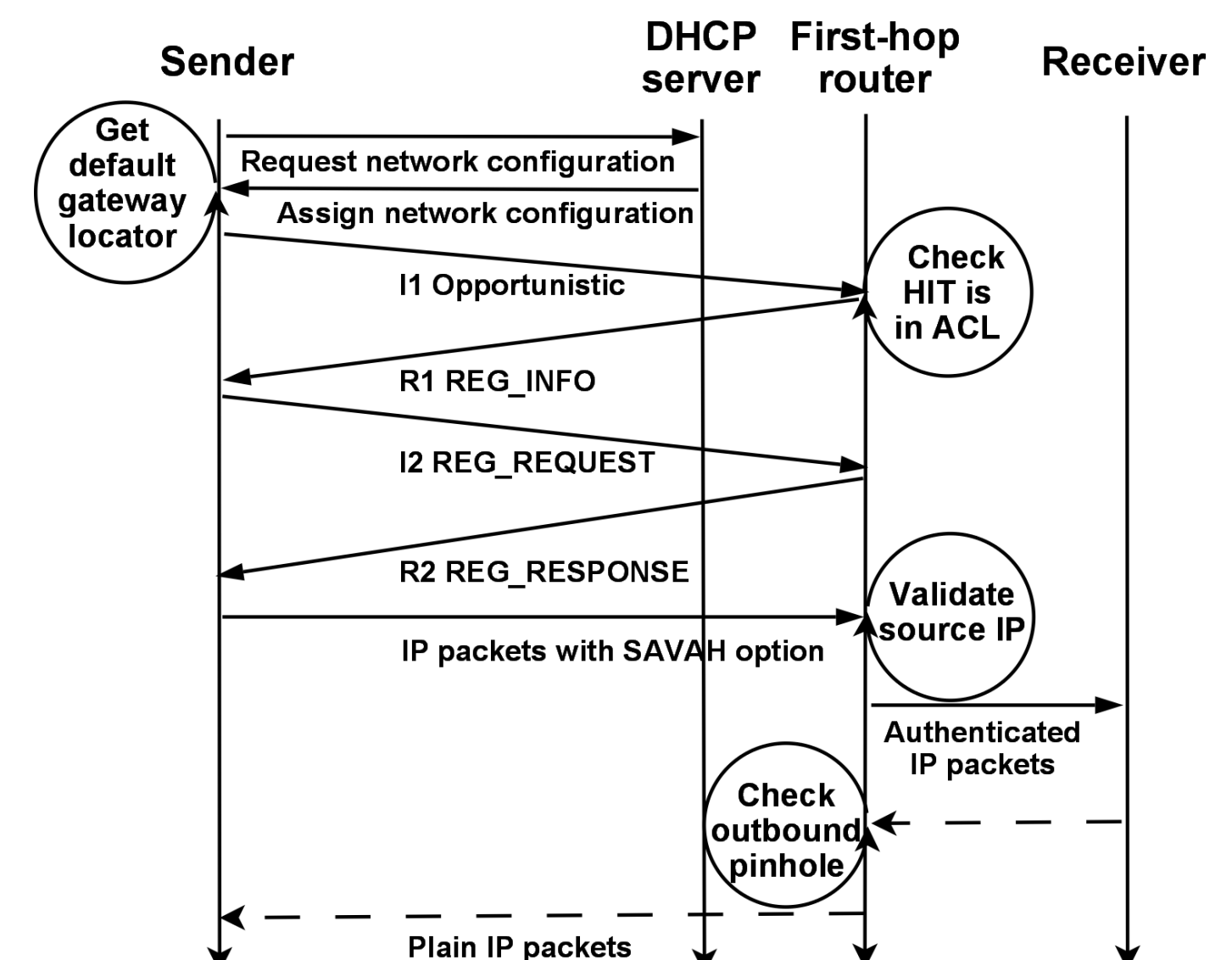
Components

- A SAVAH-enabled client (a HIP daemon and a firewall in a client mode)
- A SAVAH-enabled router (a HIP daemon and a firewall in a server mode) – must be default gateway in a network
- A DHCP server (optional) – provides automatic configuration of SAVAH clients

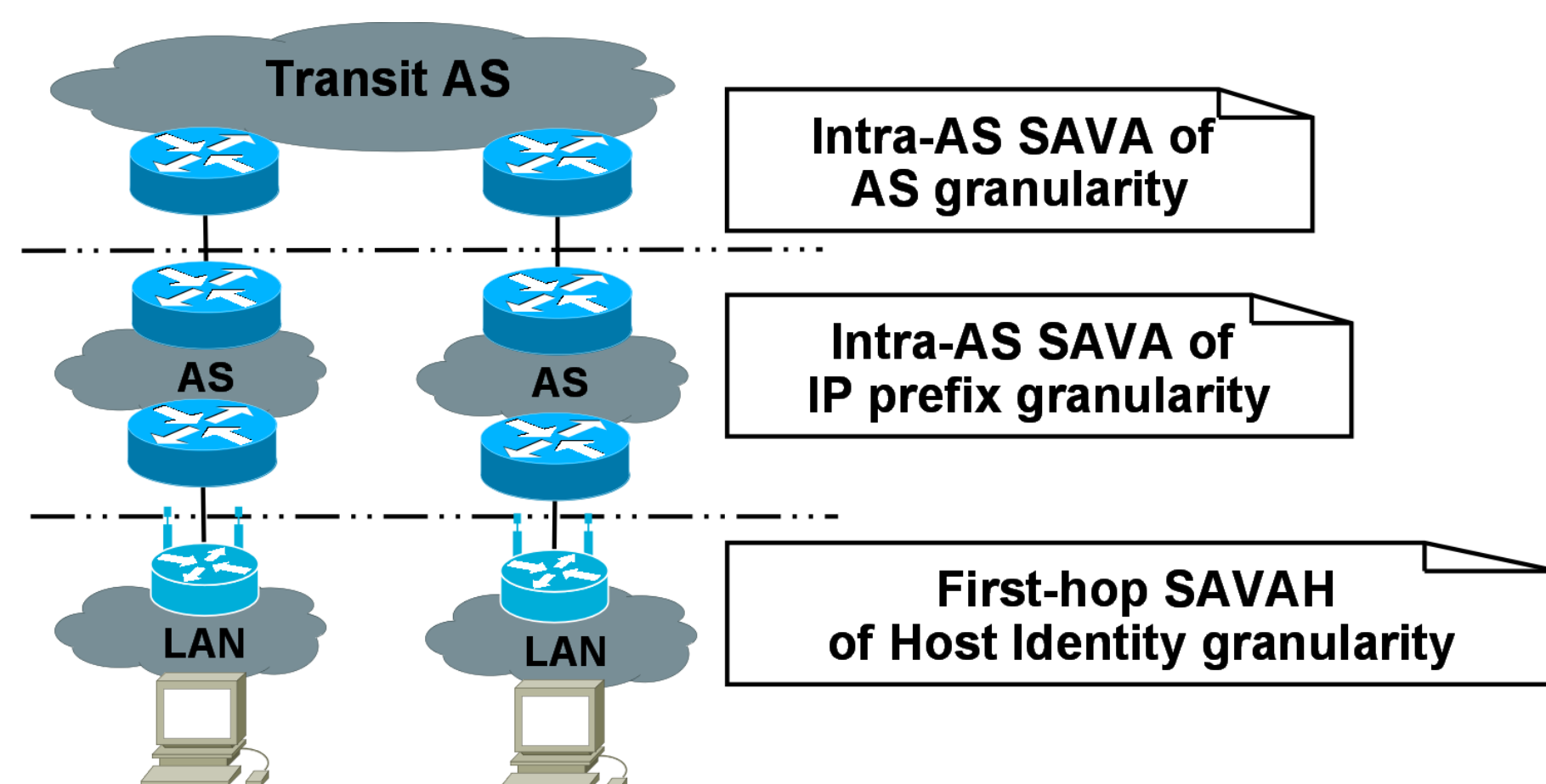
Topology



Service Registration & Authentication



Deployment



Integrating SAVAH with inter-AS source address validation

HIT Registration Procedure

